

Our Programs Need Your Support

◆ Prostate Cancer Conference

Making A Positive Impact on Quality of Life

◆ PCRI Helpline

Empowering Patients And Their Advocates

◆ PCRI Website

www.pcri.org Providing Easy Access to Empowering Information



◆ Blue Community

Family Network And Sharing Forum

◆ PCRI Insights Newsletter

Keeping You Informed And Updated

◆ PCRI Mentoring Program

Empowering Support Group Leaders

2013 Conference DVDs

will be available for a donation of \$150 or more.

2012 Conference DVDs

available for a donation of \$100 or more.

2011 And Prior

for \$25 or more

Call PCRI Office at 310-743-2116

◆ Prostate Cancer Research

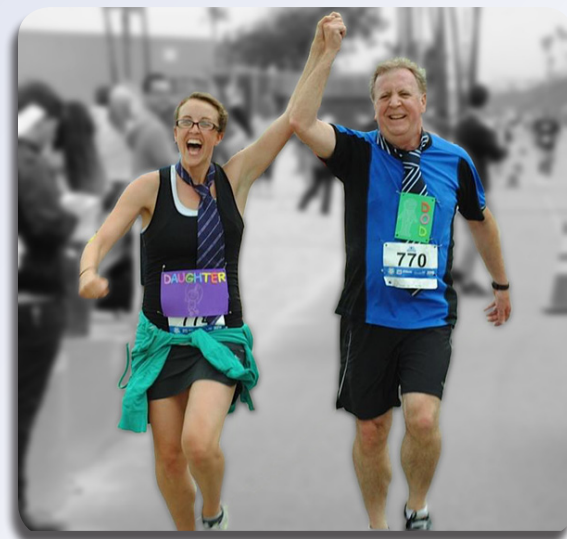
Breakthrough Discoveries

◆ Cancer Awareness

Keeping Prostate Cancer A Priority

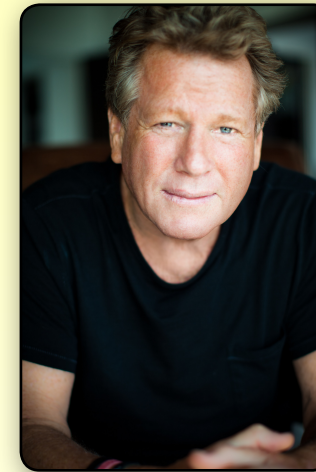
◆ PCRI Donor Program

Get Involved



Please partner with us!
Your donations keep these programs alive.

RYAN O'NEAL



I HATE CANCER

Last year I faced a real scare when the doctor felt a prostate abnormality during my annual physical. His concern that it was possibly prostate cancer turned out to be true. It was a Gleason 4 + 3 = 7, the kind that needs treatment. I was referred to a world-class doctor and thankfully, I'm in remission without any lasting bad effects.

Prostate cancer is actually the second cancer bullet I have dodged. Ten years ago I was diagnosed with chronic myelogenous leukemia. Back then a visionary doctor had the courage to start me on a new investigational medication. It worked.

But in 2006 my precious Farrah was diagnosed. We battled against the cancer for three years, traveling the world looking for an answer. To raise awareness, and to help others with cancer, "Farrah's Story" was aired as a two-hour documentary on NBC, five weeks before she passed. Our son Redmond and I were so fortunate to have had Farrah in our lives and still grieve our great loss.

I know that I am not alone and that many of you have been through similar struggles and heartaches. Most of you receiving this letter have experienced the intense stress of a cancer diagnosis. You have shared in the fear and frustration that comes with searching for trustworthy resources in a minefield of misinformation.

The Prostate Cancer Research Institute is a charitable foundation created specifically to provide unbiased guidance by helping men know all their options. Their *Helpline* provides personalized one-on-one conversation and their *website* makes information available to over a million visitors a year.

As the end of the year draws near, let's lavishly support the PCRI's mission. Your generous donation will help us bring assistance and clarity to thousands of men.

Sincerely,

Ryan O'Neal



P.S. DVD's for the 2013 conference will be available soon!