



**I'm hopeful.  
I'm determined.  
I'm ready**  
to fight my prostate cancer.

**What is ERLEADA®?**

ERLEADA® (apalutamide) is a prescription medicine used for the treatment of prostate cancer:

- that has spread to other parts of the body and still responds to a medical or surgical treatment that lowers testosterone,
- OR**
- that has not spread to other parts of the body and no longer responds to a medical or surgical treatment that lowers testosterone.

It is not known if ERLEADA® is safe and effective in females.  
It is not known if ERLEADA® is safe and effective in children.

**IMPORTANT SAFETY INFORMATION**

- **ERLEADA® may cause serious side effects including:**  
Heart disease, stroke, or mini-stroke, fractures and falls, and seizure
- The most common side effects of ERLEADA® include feeling very tired, joint pain, rash—tell your healthcare provider if you get a rash, decreased appetite, fall, weight loss, hypertension, hot flash, diarrhea, fracture

Please see the Important Safety Information throughout and on pages 11-12, and [click here](#) for the Important Product Information.

## Table of Contents

<a href="#">The path of prostate cancer.....</a>	<a href="#">3</a>
<a href="#">How ERLEADA® (apalutamide) may help.....</a>	<a href="#">4</a>
<a href="#">How androgens help fuel prostate cancer.....</a>	<a href="#">6</a>
<a href="#">How to take ERLEADA®.....</a>	<a href="#">7</a>
<a href="#">How to get ERLEADA®.....</a>	<a href="#">8</a>
<a href="#">Get help paying for your ERLEADA®.....</a>	<a href="#">9</a>
<a href="#">Important Safety Information.....</a>	<a href="#">11</a>
<a href="#">Connecting with your healthcare team.....</a>	<a href="#">13</a>
<a href="#">Questions to ask your doctor.....</a>	<a href="#">13</a>

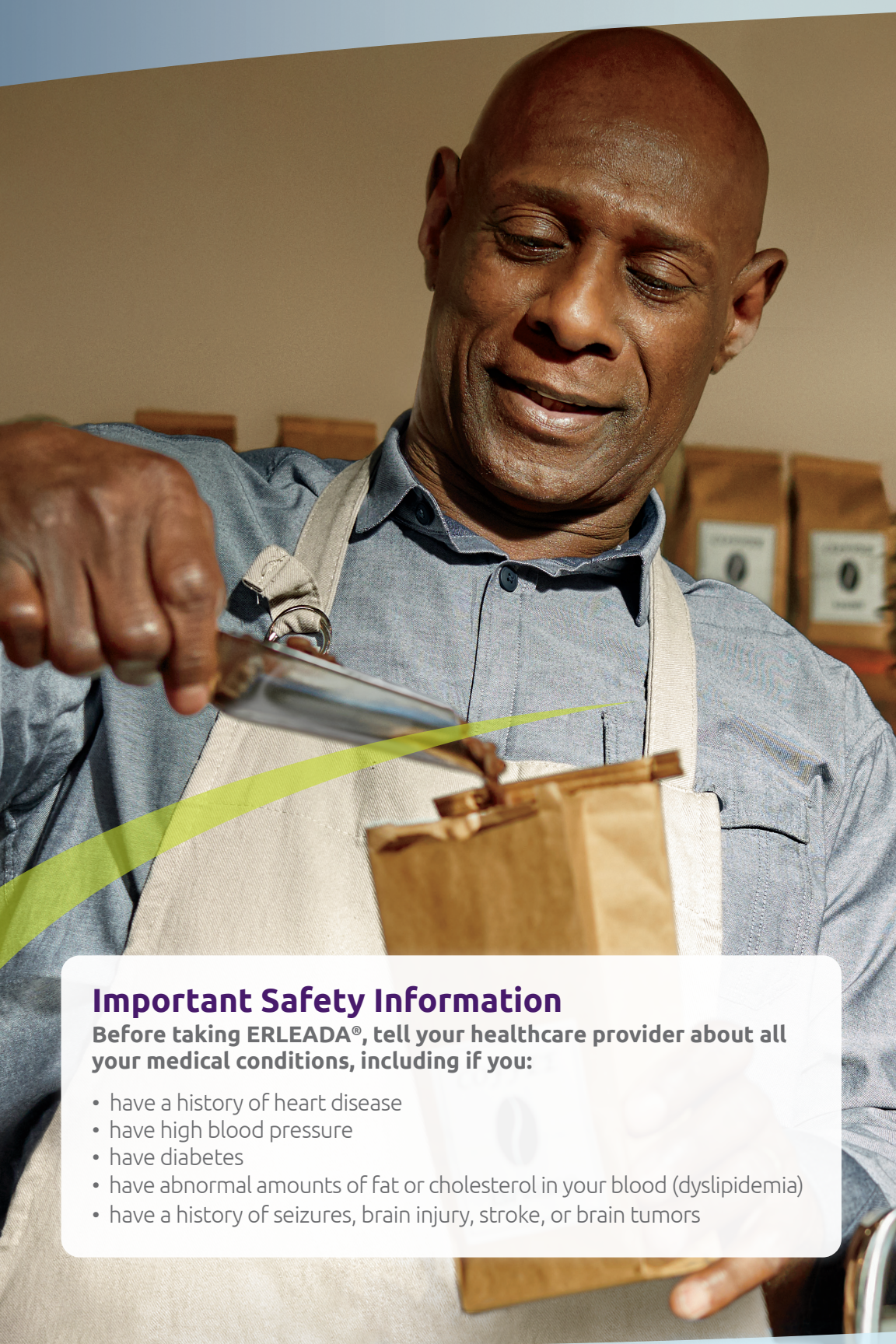
janssen  
**CarePath**

**Savings & Support Information**  
833-ERLEADA (833-375-3232) or  
[JanssenCarePath.com/Erleada](https://www.JanssenCarePath.com/Erleada)



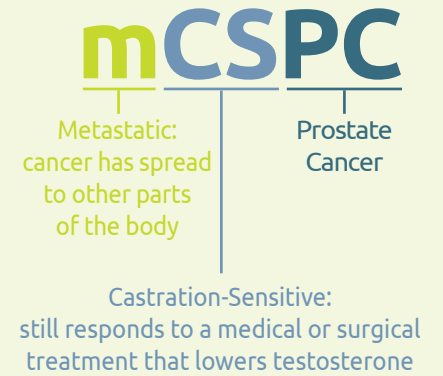


# ERLEADA® (apalutamide) is used to treat men with mCSPC and nmCRPC



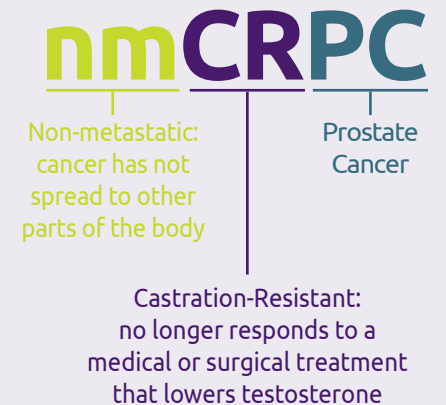
Prostate cancer that **HAS SPREAD** to other parts of the body and **STILL** responds to a medical or surgical treatment that lowers testosterone.

This is called metastatic castration-sensitive prostate cancer, or mCSPC.



Prostate cancer that **HAS NOT SPREAD** to other parts of the body and **NO LONGER** responds to a medical or surgical treatment that lowers testosterone.

This is called non-metastatic castration-resistant prostate cancer, or nmCRPC.



## Important Safety Information

Before taking ERLEADA®, tell your healthcare provider about all your medical conditions, including if you:

- have a history of heart disease
- have high blood pressure
- have diabetes
- have abnormal amounts of fat or cholesterol in your blood (dyslipidemia)
- have a history of seizures, brain injury, stroke, or brain tumors

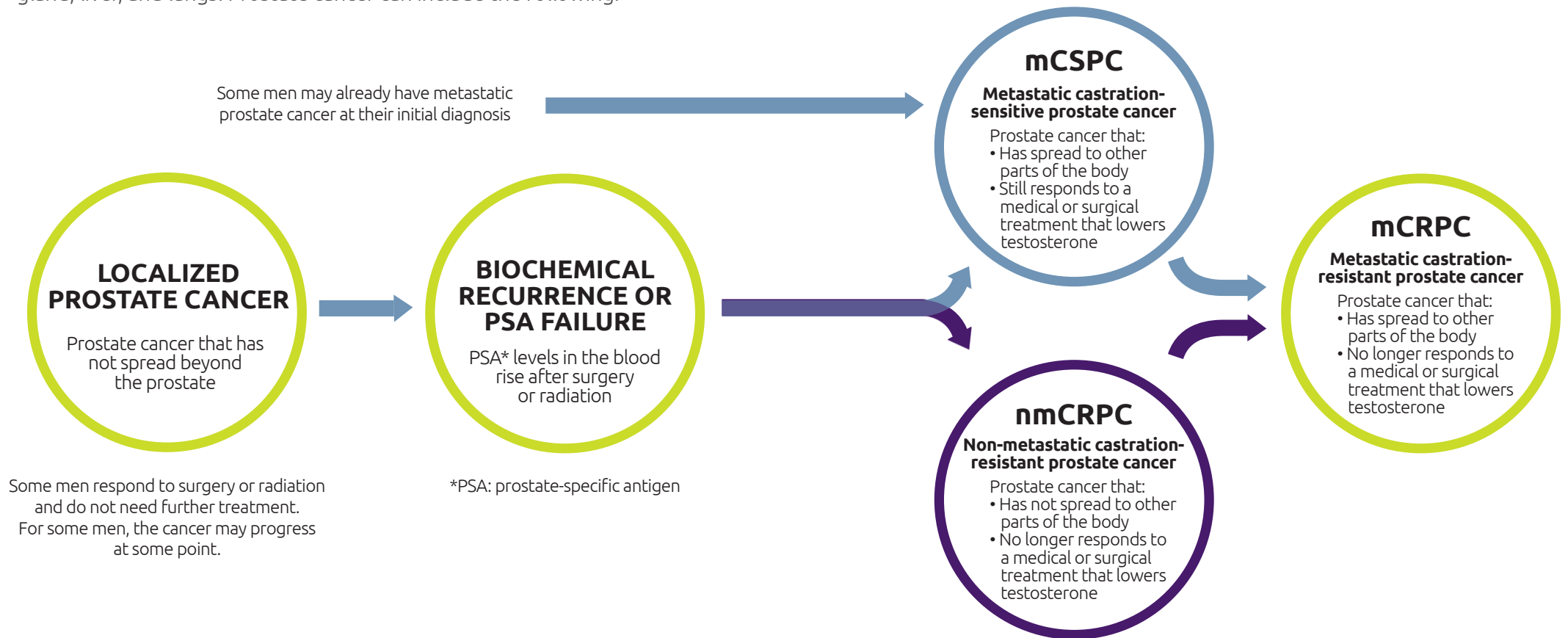
Please see the Important Safety Information throughout and on pages [11-12](#), and [click here](#) for the Important Product Information.



# The path of prostate cancer

## Not all prostate cancer is the same.

It ranges from cancer that has not spread beyond the prostate to cancer that has spread to other parts of the body (metastasis). The most common sites where prostate cancer can spread are bones, adrenal gland, liver, and lungs. Prostate cancer can include the following:



See the clinical study results with ERLEADA® (apalutamide) in men with mCSPC and nmCRPC on the following pages.

Please see the Important Safety Information throughout and on pages [11-12](#), and [click here](#) for the Important Product Information.





# In a clinical study, ERLEADA<sup>®</sup> (apalutamide) gave certain men a chance to live longer

In men with prostate cancer that **HAS SPREAD** to other parts of the body and still responds to a medical or surgical treatment that lowers testosterone

ERLEADA<sup>®</sup> + ADT\* was compared with placebo<sup>†</sup> + ADT in a clinical study of 1052 men with metastatic castration-sensitive prostate cancer (mCSPC).

► In this study, men either received ERLEADA<sup>®</sup> at a dose of 240 mg once daily or placebo. All patients in the study received ADT.\*

In this clinical study, **ERLEADA<sup>®</sup> + ADT reduced the risk of death by 33%** vs men taking placebo + ADT

**33%**  
REDUCED  
RISK OF DEATH

Median (middle) data has not been reached.

\*Androgen deprivation therapy includes medical or surgical treatment that lowers testosterone.

<sup>†</sup>Pronounced "pluh-see-bow": a pill that looks like "real" medicine, but contains nothing to affect health.

<sup>‡</sup>Progression was defined as the length of time patients lived without their disease spreading further as measured by imaging studies or dying.

Please see the Important Safety Information throughout and on pages [11-12](#), and [click here](#) for the Important Product Information.

ERLEADA<sup>®</sup> gave certain men more time without their cancer progressing<sup>‡</sup>

**52%**  
REDUCED  
RISK OF  
PROGRESSION<sup>‡</sup>

In this clinical study, **ERLEADA<sup>®</sup> + ADT reduced the risk of prostate cancer progressing by 52%** vs men taking placebo + ADT

Median (middle) data has not been reached for ERLEADA<sup>®</sup>.

The clinical study for men with mCSPC also evaluated this additional measure:

ERLEADA<sup>®</sup> gave certain men more time without starting chemotherapy

In this clinical study, **ERLEADA<sup>®</sup> + ADT reduced the risk of beginning chemotherapy by 61%** vs men taking placebo + ADT

**61%**  
REDUCED RISK  
OF BEGINNING  
CHEMOTHERAPY

Median (middle) data has not been reached.

## Important Safety Information, (continued)

Tell your healthcare provider about all the medicines you take, including prescription and over-the-counter medicines, vitamins, and herbal supplements. ERLEADA<sup>®</sup> can interact with many other medicines.





# ERLEADA® (apalutamide) helped delay the spread of prostate cancer

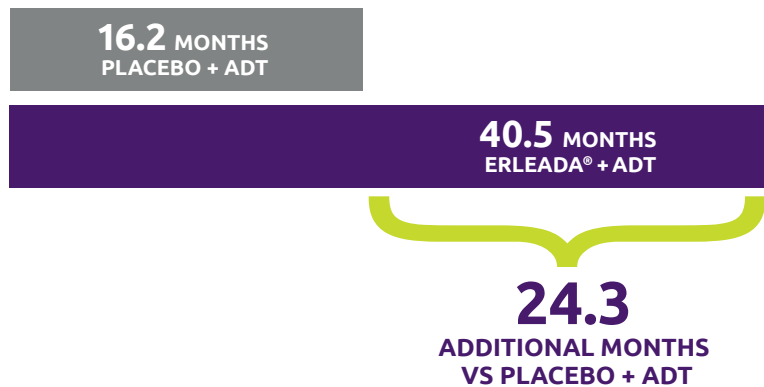
In men with prostate cancer that **HAS NOT SPREAD to other parts of the body** and no longer responds to a medical or surgical treatment that lowers testosterone

ERLEADA® + ADT\* was compared with placebo† + ADT in a clinical study of 1207 men with non-metastatic castration-resistant prostate cancer (nmCRPC).

► In this study, patients either received ERLEADA® at a dose of 240 mg once daily or placebo. All patients in the study received ADT.\*

**In this clinical study, ERLEADA® + ADT delayed the spread of cancer to other parts of the body or death by 2 years (24.3 months) compared with placebo + ADT**

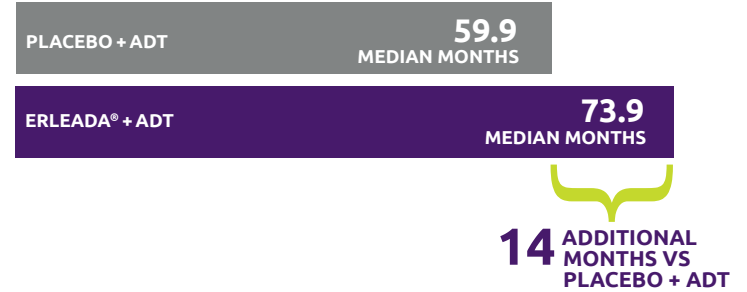
**MEDIAN‡ MONTHS:** Median number of months living without metastasis.



Please see the Important Safety Information throughout and on pages [11-12](#), and [click here](#) for the Important Product Information.

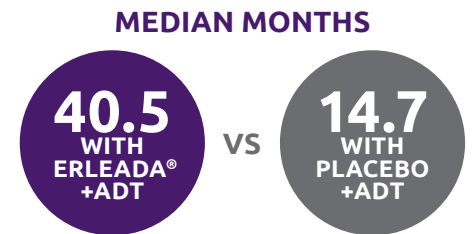
## Overall Survival

Length of time patients lived after starting treatment as part of the study.



## Progression-Free Survival

Length of time patients lived without their prostate cancer spreading to local or distant parts of the body or death.



**37%**  
REDUCED RISK OF BEGINNING CHEMOTHERAPY VS PLACEBO + ADT

## Time to Chemotherapy

Length of time from when patients began study to starting chemotherapy.

Median (middle) data has not been reached.

\*Androgen deprivation therapy includes medical or surgical treatment that lowers testosterone.

†Pronounced "pluh-see-bow": a pill that looks like "real" medicine but contains nothing to affect health.

‡Median means that for 50% of the patients, living without metastasis was longer than 40.5 months, and for 50% of the patients, it was shorter than 40.5 months.

## Important Safety Information, (continued)

You should not start or stop any medicine before you talk with the healthcare provider that prescribed ERLEADA®.

Know the medicines you take. Keep a list of them with you to show to your healthcare provider and pharmacist when you get a new medicine.



# ERLEADA® (apalutamide) + ADT work together to lower androgens that can help fuel the prostate cancer

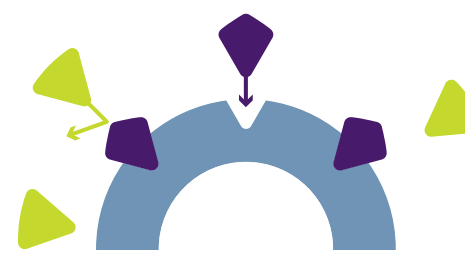
## ANDROGEN



Androgens are male hormones, primarily testosterone, that are needed for the prostate to function normally.

However, when androgens attach to androgen receptors, they can help fuel prostate cancer cell growth.

## ERLEADA®



ERLEADA® blocks androgens from attaching to receptors to help prevent cancer cells from growing.

## ANDROGEN REDUCTION



### The goal of ADT is to lower androgen levels

Medical or surgical treatment that lowers testosterone are also referred to as androgen deprivation therapy (ADT).

ADT includes treatments to suppress or block the production or action of male hormones called androgens.

### Important Safety Information, (continued)

**Before taking ERLEADA®, tell your healthcare provider about all your medical conditions, including if you (continued):**

- Are pregnant or plan to become pregnant. ERLEADA® can cause harm to your unborn baby and loss of pregnancy (miscarriage)
- Have a partner who is pregnant or may become pregnant
  - Males who have female partners who are able to become pregnant should use effective birth control (contraception) during treatment and for 3 months after the last dose of ERLEADA®
  - Males should use a condom during sex with a pregnant femaleTalk with your healthcare provider if you have questions about birth control.
- Are breastfeeding or plan to breastfeed. It is not known if ERLEADA® passes into breast milk

Please see the Important Safety Information throughout and on pages [11-12](#), and [click here](#) for the Important Product Information.





## How to take ERLEADA<sup>®</sup> (apalutamide)

Take ERLEADA<sup>®</sup> exactly as your healthcare provider tells you.

Take ERLEADA<sup>®</sup>:



once a day



orally



with or without food

The recommended dose of ERLEADA<sup>®</sup> is 240 mg (four 60 mg tablets) taken orally once daily.

- ▶ Take ERLEADA<sup>®</sup> exactly as your healthcare provider tells you
- ▶ Your healthcare provider may change your dose if needed
- ▶ Do not stop taking your prescribed dose of ERLEADA<sup>®</sup> without talking with your healthcare provider first
- ▶ Take your prescribed dose of ERLEADA<sup>®</sup> 1 time a day, at the same time each day
- ▶ Take ERLEADA<sup>®</sup> with or without food
- ▶ Swallow ERLEADA<sup>®</sup> tablets whole
- ▶ If you miss a dose of ERLEADA<sup>®</sup>, take your normal dose as soon as possible on the same day. Return to your normal schedule on the following day. You should not take extra tablets to make up the missed dose
- ▶ You should start or continue a gonadotropin-releasing hormone (GnRH) analog therapy during your treatment with ERLEADA<sup>®</sup> unless you have had a surgery to lower the amount of testosterone in your body (surgical castration)
- ▶ If you take too much ERLEADA<sup>®</sup>, call your healthcare provider or go to the nearest hospital emergency room

Please see the Important Safety Information throughout and on pages [11-12](#), and [click here](#) for the Important Product Information.

Unable to swallow tablets whole?  
Learn an alternate way to take ERLEADA<sup>®</sup>

Please read the complete directions for mixing ERLEADA<sup>®</sup> in applesauce below.

Taking ERLEADA<sup>®</sup> if you are unable to swallow tablets whole:



1. Place your dose of ERLEADA<sup>®</sup> in a container that contains 4 ounces (120 mL) of applesauce and stir. **DO NOT** crush the tablets.



2. Wait 15 minutes and stir the mixture.
3. Wait another 15 minutes and stir the mixture until tablets are well mixed with no chunks remaining.



4. Swallow the mixture right away using a spoon.



5. Rinse the container with 2 ounces (60 mL) of water and drink the water mixture right away.
6. Repeat the rinse with 2 ounces (60 mL) of water one more time to make sure that you take your full dose of ERLEADA<sup>®</sup>.

Swallow all the applesauce and medicine mixture within 1 hour of preparation. **DO NOT** store ERLEADA<sup>®</sup> that is mixed with applesauce.



## Staying on therapy is important

Communicating with your healthcare team gives them important information about your medicine and helps them see if any adjustments need to be made to your treatment.

### Remember, to help you get the most out of your treatment with ERLEADA®:

- ▶ Take ERLEADA® exactly as your doctor tells you
- ▶ Tell your doctor if you have any side effect that does not go away or that bothers you
- ▶ Call your doctor for medical advice about side effects
- ▶ Do not stop taking your prescribed dose of ERLEADA® without talking with your doctor first



Please see the Important Safety Information throughout and on pages 11-12, and [click here](#) for the Important Product Information.

## How to get ERLEADA® (apalutamide)

There are 2 ways of filling your ERLEADA® prescription:



### Doctor's Office Pharmacy

If your doctor's office has its own pharmacy, your prescription may be available for pick-up there.

OR



### Specialty Pharmacy

Your doctor will most likely send your prescription to a specialty pharmacy. Specialty pharmacies carry certain medications that are not available at retail pharmacies.

### The Specialty Pharmacy Path



#### When you receive your prescription

Your doctor's office will complete the necessary paperwork and then submit on your behalf to the specialty pharmacy. **Before you leave the doctor's office, make sure your paperwork has been submitted.**



#### Within a few days

The specialty pharmacy will call you to discuss your prescription costs and arrange delivery by mail of your ERLEADA® right to your front door. **If you don't receive a call, contact your doctor's office.**



#### Within 2 weeks

Your 30-day ERLEADA® prescription bottle should arrive by mail **within 14 days**. If it does not, contact your doctor's office.

Every month, you will be contacted to coordinate your monthly refill.





Once you and your doctor have decided that ERLEADA® (apalutamide) is right for you, Janssen CarePath will help you find the resources you may need to help get started on your medication and stay on track, including:



### **Paying for ERLEADA®**

Janssen CarePath can explain your potential out-of-pocket costs and identify cost support options that may help with managing your out-of-pocket costs—whether you have commercial or private health insurance, government-funded healthcare coverage such as Medicare or Medicaid, or have no insurance coverage.



### **Getting Started**

A personally assigned Janssen CarePath Care Coordinator will work closely with you and your doctor to help you get started by:

- ▶ Reviewing your health plan benefits to help answer questions you may have about insurance coverage for ERLEADA®
- ▶ Offering treatment education resources



### **Staying on Track**

We understand how important it is for you to take ERLEADA® as your doctor prescribed. That's why we've created some tools to help you stay on your treatment:

- ▶ Personalized appointment or refill reminders
- ▶ Information about [AdvocacyConnector.com](https://www.advocacyconnector.com), a Janssen-sponsored resource that connects patients and caregivers to national and state-specific advocacy groups that offer resources that may be relevant to your needs.

## **Get started with a Janssen CarePath Account**

Sign up or log in to your personal Janssen CarePath account at [MyJanssenCarePath.com](https://www.MyJanssenCarePath.com) so you can check your insurance coverage for ERLEADA®; if eligible, enroll in the Janssen CarePath Savings Program and manage program benefits; and sign up for treatment support.

**If you have any questions, please  
call a Janssen CarePath Care Coordinator at  
833-ERLEADA (833-375-3232) | Monday–Friday, 8:00 AM to 8:00 PM ET  
Multilingual phone support is available.**

**Visit [JanssenCarePath.com/Erleada](https://www.JanssenCarePath.com/Erleada)**



# Affordability options for ERLEADA<sup>®</sup> (apalutamide)

## If you use commercial or private health insurance to pay for your medication

### Janssen CarePath Savings Program

ELIGIBLE PATIENTS PAY **\$0** PER MONTH



\$15,000 maximum program benefit per calendar year or one-year supply, whichever comes first. Not valid for patients using Medicare, Medicaid, or other government-funded programs to pay for their medications. Terms expire at the end of each calendar year and may change. See program requirements at [Erleada.JanssenCarePathSavings.com](https://www.erleada.janssencarepathsavings.com).

### To enroll in the Janssen CarePath Savings Program

Visit [MyJanssenCarePath.com](https://www.MyJanssenCarePath.com) to create an online account, check your eligibility, enroll in the Savings Program, manage your Savings Program benefits, and receive timely alerts and program updates.

If you only want to check your eligibility and enroll in the Janssen CarePath Savings Program, visit the **Express Enrollment site** at [MyJanssenCarePath.com/express](https://www.MyJanssenCarePath.com/express). There is a “Print a Card” feature to provide you with a Savings Program card. You will not have a Janssen CarePath account and will not be able to view and manage your Savings Program benefits.

Or call a **Janssen CarePath Care Coordinator** at **833-ERLEADA (833-375-3232), Monday–Friday, 8:00 AM to 8:00 PM ET.**

Please see the Important Safety Information throughout and on pages **11-12**, and [click here](#) for the Important Product Information.

## If you use Medicare



Janssen CarePath can provide information about other resources, such as **State Health Insurance Assistance Programs (SHIPs), State Pharmaceutical Assistance Programs (SPAPs), and Medicare Part D Extra Help**, that may be able to help with out-of-pocket medication costs. To learn more about eligibility and how these programs may help you pay for Medicare Part D products, visit [medicare.gov/your-medicare-costs](https://www.medicare.gov/your-medicare-costs).

### Medicare Part D Extra Help – Low-Income Subsidy

- ▶ Eligible patients may be able to access brand-name drugs for less than \$10 per month
- ▶ You may be able to get Extra Help to help pay for the costs related to a Medicare prescription drug plan, such as monthly premiums, annual deductibles, and prescription co-payments. **Learn more at [ssa.gov](https://www.ssa.gov)**

## If you use government-funded healthcare programs such as Medicare, Medicaid, or need supplemental assistance with paying for your Janssen medication

### ZERO360: Comprehensive Patient Support

- ▶ A free, comprehensive patient support service to help prostate cancer patients and their families. They can help you understand your coverage options, find sources of financial aid, or resolve issues with your insurance company. They have a team of experienced case managers who are ready to help you and your family through your personal prostate cancer journey.

**Learn more at [zerocancer.org](https://www.zerocancer.org)**





## Affordability options (continued)



### Foundation support may be available:

CancerCare® 866-552-6729 <a href="http://CancerCare.org">CancerCare.org</a>	Patient Advocate Foundation 866-512-3861 <a href="http://Copays.org">Copays.org</a>
Patient Access Network Foundation 866-316-7263 <a href="http://Panfoundation.org">Panfoundation.org</a>	The Assistance Fund 855-845-3663 <a href="http://Tafcares.org">Tafcares.org</a>

Independent co-pay assistance foundations have their own rules for eligibility. We cannot guarantee a foundation will help you. We only can refer you to a foundation that supports your disease state. This information is provided as a resource for you. We do not endorse any particular foundation. The foundations on this list are not the only ones that might be able to help you.

### If you have no health insurance or no coverage for your Janssen medication



JanssenPrescriptionAssistance.com provides information on affordability programs that may be available. For a comprehensive list of affordability programs, visit [JanssenPrescriptionAssistance.com/Erleada](http://JanssenPrescriptionAssistance.com/Erleada).

### Other Resources

The Johnson & Johnson Patient Assistance Foundation, Inc. (JJPAF) is an independent, nonprofit organization that is committed to helping eligible patients without insurance coverage receive prescription products donated by Johnson & Johnson operating companies. To see if you might qualify for assistance, please contact a JJPAF program specialist at 800-652-6227 (Monday–Friday, 9:00 AM to 6:00 PM ET) or visit the foundation website at [JJPAF.org](http://JJPAF.org).

Please see the Important Safety Information throughout and on pages 11-12, and [click here](#) for the Important Product Information.

## Important Safety Information

### Before taking ERLEADA® (apalutamide), tell your healthcare provider about all your medical conditions, including if you:

- ▶ have a history of heart disease
- ▶ have high blood pressure
- ▶ have diabetes
- ▶ have abnormal amounts of fat or cholesterol in your blood (dyslipidemia)
- ▶ have a history of seizures, brain injury, stroke, or brain tumors
- ▶ are pregnant or plan to become pregnant. ERLEADA® can cause harm to your unborn baby and loss of pregnancy (miscarriage).
- ▶ have a partner who is pregnant or may become pregnant.
  - Males who have female partners who are able to become pregnant should use effective birth control (contraception) during treatment and for 3 months after the last dose of ERLEADA®.
  - Males should use a condom during sex with a pregnant female. Talk with your healthcare provider if you have questions about birth control.
- ▶ are breastfeeding or plan to breastfeed. It is not known if ERLEADA® passes into breast milk.

**Tell your healthcare provider about all the medicines you take**, including prescription and over-the-counter medicines, vitamins, and herbal supplements. ERLEADA® can interact with many other medicines.

You should not start or stop any medicine before you talk with the healthcare provider that prescribed ERLEADA®.

Know the medicines you take. Keep a list of them with you to show to your healthcare provider and pharmacist when you get a new medicine.

Please see the full [Prescribing Information for ERLEADA®](#).



## Important Safety Information (continued)

### How should I take ERLEADA® (apalutamide)?

- ▶ Take ERLEADA® exactly as your healthcare provider tells you.
- ▶ Your healthcare provider may change your dose if needed.
- ▶ Do not stop taking your prescribed dose of ERLEADA® without talking with your healthcare provider first.
- ▶ Take your prescribed dose of ERLEADA® 1 time a day, at the same time each day.
- ▶ Take ERLEADA® with or without food.
- ▶ Swallow ERLEADA® tablets whole.
- ▶ If you miss a dose of ERLEADA®, take your normal dose as soon as possible on the same day. Return to your normal schedule on the following day. You should not take extra tablets to make up the missed dose.
- ▶ You should start or continue a gonadotropin-releasing hormone (GnRH) analog therapy during your treatment with ERLEADA® unless you have had a surgery to lower the amount of testosterone in your body (surgical castration).
- ▶ If you take too much ERLEADA®, call your healthcare provider or go to the nearest hospital emergency room.

### What are the possible side effects of ERLEADA®?

#### ERLEADA® may cause serious side effects including:

- ▶ **Heart Disease, Stroke, or Mini-Stroke.** Bleeding in the brain or blockage of the arteries in the heart or in part of the brain have happened in some people during treatment with ERLEADA® and can lead to death. Your healthcare provider will monitor you for signs and symptoms of heart or brain problems during your treatment with ERLEADA®. Call your healthcare provider or get medical help right away if you get:
  - chest pain or discomfort at rest or with activity
  - shortness of breath
  - numbness or weakness of the face, arm, or leg, especially on one side of the body
  - trouble talking or understanding
  - trouble seeing in one or both eyes
  - dizziness, loss of balance or coordination, or trouble walking

- ▶ **Fractures and Falls.** ERLEADA® treatment can cause bones and muscles to weaken and may increase your risk for falls and fractures. Falls and fractures have happened in people during treatment with ERLEADA®. Your healthcare provider will monitor your risks for falls and fractures during treatment with ERLEADA®.
- ▶ **Seizure.** Treatment with ERLEADA® may increase your risk of having a seizure. You should avoid activities where a sudden loss of consciousness could cause serious harm to yourself or others. Tell your healthcare provider right away if you have a loss of consciousness or seizure. Your healthcare provider will stop ERLEADA® if you have a seizure during treatment.

#### The most common side effects of ERLEADA® include:

- ▶ feeling very tired
- ▶ joint pain
- ▶ rash. Tell your healthcare provider if you get a rash
- ▶ decreased appetite
- ▶ fall
- ▶ weight loss
- ▶ hypertension
- ▶ hot flash
- ▶ diarrhea
- ▶ fracture

ERLEADA® may cause fertility problems in males, which may affect the ability to father children. Talk to your healthcare provider if you have concerns about fertility. **Do not** donate sperm during treatment with ERLEADA® and for 3 months after the last dose of ERLEADA®.

Tell your healthcare provider if you have any side effect that bothers you or that does not go away.

These are not all the possible side effects of ERLEADA®.

Call your doctor for medical advice about side effects. You may report side effects to FDA at 1-800-FDA-1088.

Please see the full [Prescribing Information for ERLEADA®](#).





## Every fighter has a team behind him



Enter your team's contact information so you can have all of their important information in one place.

### SPECIALTY PHARMACY

Name \_\_\_\_\_

Phone \_\_\_\_\_

Email \_\_\_\_\_

### ONCOLOGIST

Name \_\_\_\_\_

Phone \_\_\_\_\_

Email \_\_\_\_\_

### UROLOGIST

Name \_\_\_\_\_

Phone \_\_\_\_\_

Email \_\_\_\_\_

### PRIMARY CARE DOCTOR

Name \_\_\_\_\_

Phone \_\_\_\_\_

Email \_\_\_\_\_

### NURSE

Name \_\_\_\_\_

Phone \_\_\_\_\_

Email \_\_\_\_\_

Please see the Important Safety Information throughout and on pages [11-12](#), and [click here](#) for the Important Product Information.

## Questions to ask your doctor



Always remember that your healthcare team should be your main source of treatment direction and information. You should have an open and honest conversation with them.

### Here are some questions to help get you started:

Can you explain why my prostate cancer has advanced?

\_\_\_\_\_  
\_\_\_\_\_

Is ERLEADA® (apalutamide) right for me?

Could I benefit by taking ERLEADA® now in addition to taking ADT?

\_\_\_\_\_  
\_\_\_\_\_

Could ERLEADA® help delay my type of prostate cancer from spreading?

\_\_\_\_\_  
\_\_\_\_\_

What Important Safety Information should I know about?

Can you explain the potential side effects?

\_\_\_\_\_  
\_\_\_\_\_

Do I qualify for the \$0-a-month savings program?

What financial assistance is available to help me pay for my prescription?

\_\_\_\_\_  
\_\_\_\_\_





# Stay hopeful. Stay determined. Stay active in your care.



**Talk** to your doctor and healthcare team to be sure you receive clear instructions and information going forward.

**If you have questions or concerns about your condition or treatment, don't hesitate to:**



**Call** Janssen CarePath at **833-ERLEADA (833-375-3232)**

Monday–Friday, 8:00 AM to 8:00 PM ET or visit

[JanssenCarePath.com/Erleada](https://www.JanssenCarePath.com/Erleada) for resources to help you get started and stay on track.



**Visit** [www.erleada.com](https://www.erleada.com) to learn more about ERLEADA®.



**Learn** about prostate cancer and how it can affect caregivers and families at [www.MyProstateCancerRoadmap.com](https://www.MyProstateCancerRoadmap.com).



**Connect** with organizations providing information and support at [www.cancer.com](https://www.cancer.com).

**We're determined to fight together.**

janssen  Oncology

Janssen Biotech, Inc.  
800 Ridgeview Drive  
Horsham, PA 19044 USA

© Janssen Biotech, Inc. 2020 12/20 cp-49453v6

 **Erleada**<sup>®</sup>  
(apalutamide) 60 mg tablets